



# APS/A

## Fundus Camera



OPHTHALMOLOGY / ENT



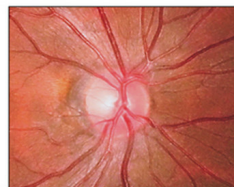
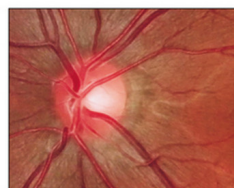
# 5DG#5

... : i bXi g'7Ua YfU



**Cod. APS/A**

✓ Color photos

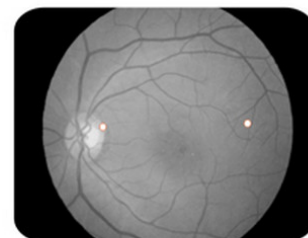


## Technical Features

Working mode	Mydriatic/Non Mydriatic
Focus Aid	Eye position dots
Display	Computer screen and anterior LCD screen (optional)
Camera Resolution	12 MEGA (72 pixels per degree minimum)
Capture card	
Professional Software	
Working distance	40mm
Field of view	53°
Horizontal angle	±30°
Longitudinal angle	±15°
Chin rest distance	70mm
Electric-table distance	200mm
Light adjustment	Inching and coarse stepless adjustment
Fixation lamp	Red LED
Working lamp	12V 60W
Power supply	AC 220V 50Hz
Weight	50kg
Image file formats	Default BMP and JPG. The JPG image is compressed max to 50:1
Documents management	Search with name, age, sex, diagnosis and any other condition input
Image post processing	Brightness, contrast, gamma, color, measure, smooth, sharp, etc
Image patching up	Combine to a whole fundus image



Internal fixation



Easy eye position adjustment, it just need to align the two dots to its brilliancy



Built-it digital capture system



Optional 7" LCD screen to Improve the observation



ESSE3 srl, Via Garibaldi 30  
14022 Castelnuovo D.B. (AT)  
Tel +39 011 99 27 706  
Fax +39 011 99 27 506  
e-mail [esse3@chierinet.it](mailto:esse3@chierinet.it)  
web: [www.esse3-medical.com](http://www.esse3-medical.com)

